

**Continuous Improvement
in Workers' accommodation**

Current

- a. Prior to FY2020, we had **invested RM70 mil in more than 100 double-storey houses and hostels** with full facilities.
- b. We have made an **investment of RM20 mil on purchasing 102 units of apartments** for our employees and renting additional houses and apartments.
- c. By end December 2020, we **relocated 2,000 of our employees to Westlite-PKNS accommodation in Petaling Jaya**, the closest facility that suits our needs at this time. At the Westlite-PKNS accommodation, we provide a host of facilities to our workers, including a canteen with three different caterers, spacious and airy recreational areas, a minimart, self-service laundry, game room, and prayer room.

Mid-term plan

- a. Approximately **RM105 mil for new workers hostels**, which includes building mega hostels in Klang and Banting in Selangor, with a combined capacity of 11,600 pax. These hostels will be fully equipped with a suite of amenities and facilities.
- b. **Purchased a Kenangan Meru apartment block in Klang, Selangor for RM95 mil** with a capacity to house 2,600 workers. The apartment block, which is expected to be completed by middle of 2022.
- c. The Group is also building and acquiring additional houses, apartments, and hostels in other states, amounting to approximately RM30 mil.

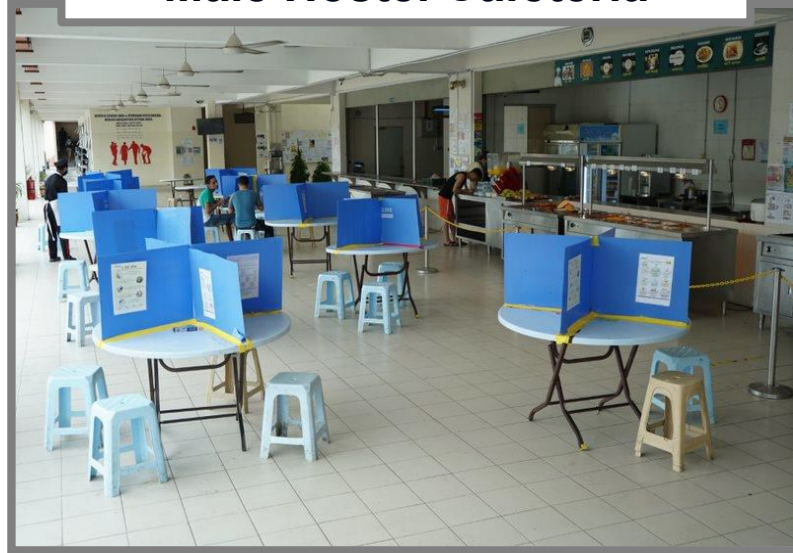
Current: Investment in Better Accommodation

In the past, we have invested **RM70mil** in more than **100 double-storey houses and hostels** with full facilities.

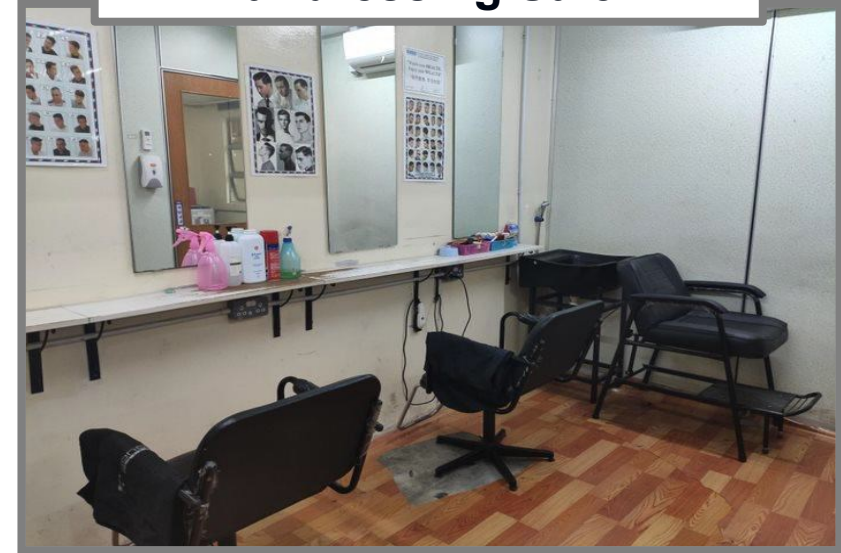
Male Hostel**Female Hostel****Double-Storey Houses**

Current: Amenities and Facilities at Klang Hostels

Male Hostel Cafeteria



Hairdressing Salon



Female Hostel Cooking Area



Mobile Reload Machine



Our houses and hostels are equipped with full facilities.

Current: Amenities and Facilities at Klang Hostels

Sports and Recreational Facilities



Remittance Counter



Laundromat



Mini Market



ATM Machine



1. Invested **RM20mil** to purchase **102 units** of apartments for workers.

Apartments

2. Renting additional houses and apartments.

Apartments**Bedroom****Kitchen**



- a) **2 blocks of hostel can accommodate 6,000 persons.**
- b) **We relocated 2,000 workers from Klang, Meru to this hostel.**
- c) **Facilities available:**
 - i. **Canteen with 3 different caterers**
 - ii. **Mini Mart**
 - iii. **Self service laundry**
 - iv. **Game room**
 - v. **Praying area**
 - vi. **Vast and spacious open areas**
 - vii. **Recreational and sports facilities**

Well-appointed workers' new accommodation at Westlite-PKNS

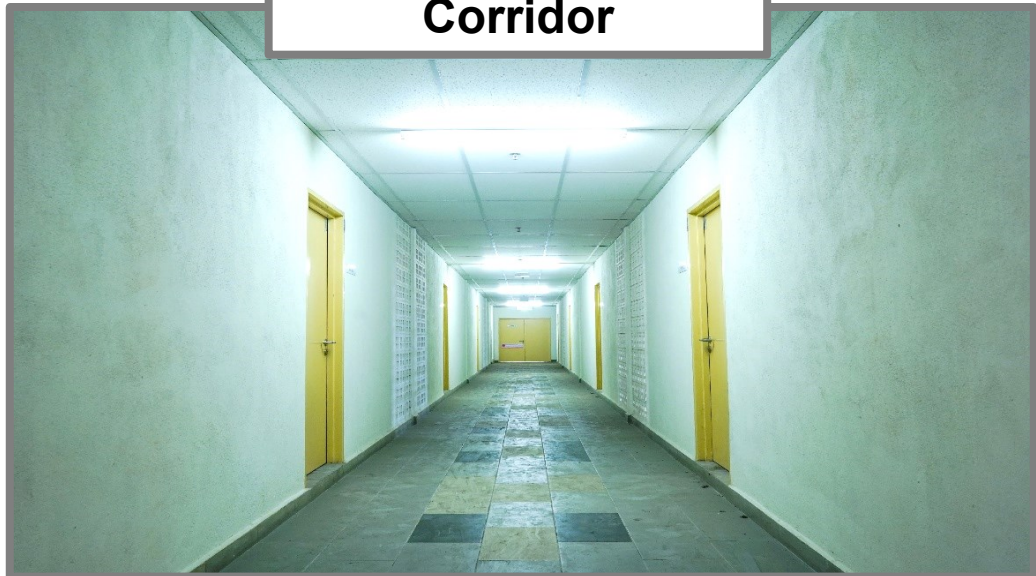
Bedroom



Washroom



Corridor



Well-appointed workers' new accommodation at Westlite-PKNS

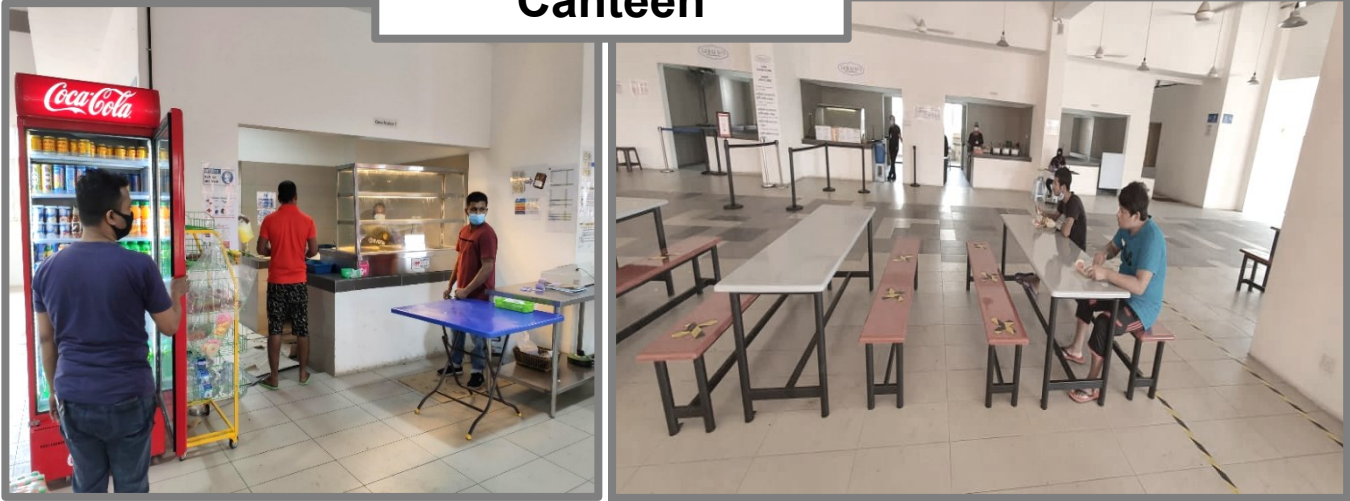
Recreational and Sports Facilities and Vast & Spacious Open Areas



Well-appointed workers' new accommodation at Westlite-PKNS

Amenities Available for Workers' Daily Needs

Canteen



Laundromat



Mini Market

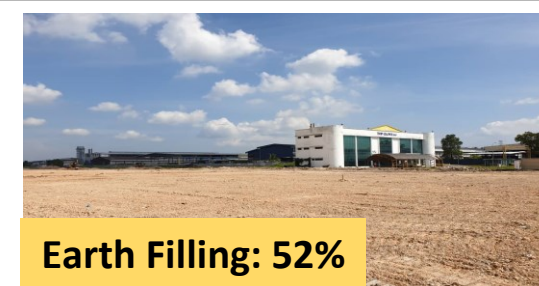


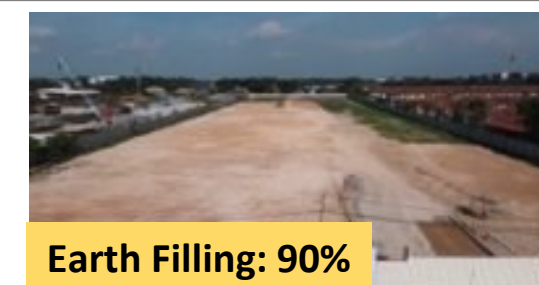
Investing RM200 mil in Workers' Hostels for 14,200 pax

Location	Estimated Capex, RM' mil	Target Capacity, pax	Target Completion
<u>A. Constructed by Top Glove</u>			
Banting: Lot 213 and Lot 214			
1) Phase 1, Block 1 & 2	16	1,000	End 2021
2) Phase 2, Block 3 & 4	16	2,000	End 2022
Aman Perdana, Klang: Lot 6495			
3) Block 1	12	1,300	Mid 2022
4) Block 2	12	1,300	End 2022
Meru, Klang			
5) Lot 5135, Block 1 & 2	19	2,200	Mid 2022
6) Lot 5116 and Lot 5117, Phase 1	15	1,900	Mid 2022
7) Lot 5116 and Lot 5117, Phase 2	15	1,900	End 2023
<u>B. Purchased from developer</u>			
8) Kenangan Meru Apartment	95	2,600	Mid 2022
Grand Total	RM 200 mil	14,200	


Banting

Construction: 58%

Aman Perdana, Klang

Earth Filling: 52%

Meru, Klang

Earth Filling: 90%

Kenangan Meru Apartment

Construction: 40%